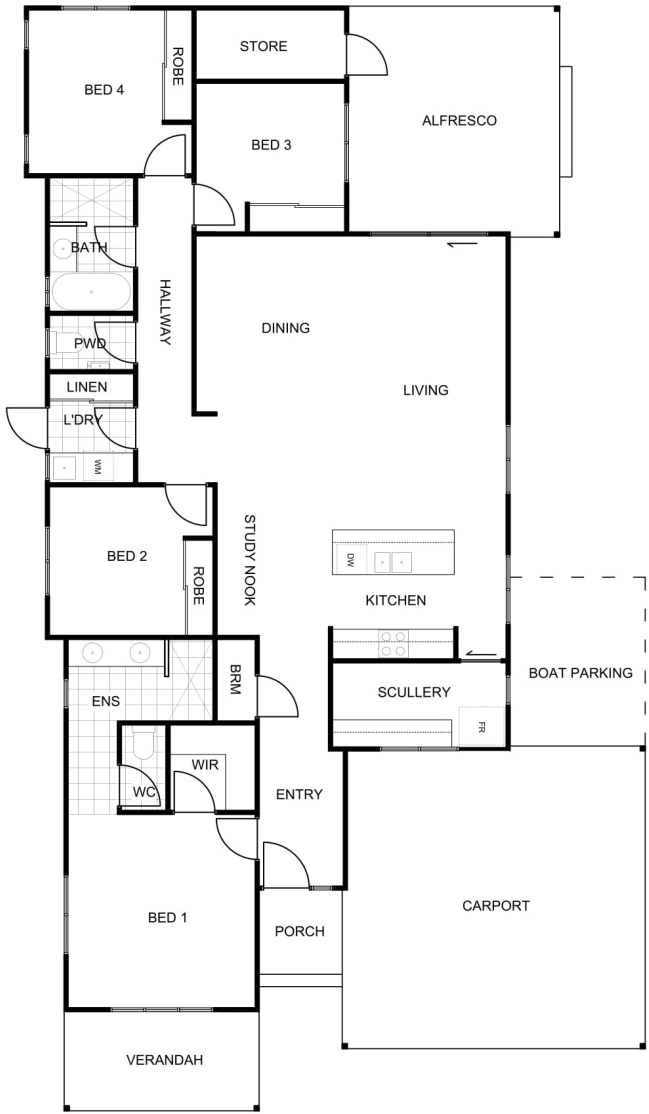




# ARCHIPELAGO



Residence:	141.6m <sup>2</sup>
Carport:	37.21m <sup>2</sup>
Alfresco:	20.95m <sup>2</sup>
Verandah:	7.84m <sup>2</sup>
Porch:	2.83m <sup>2</sup>
Store:	2.94m <sup>2</sup>
<b>TOTAL BUILDING:</b>	<b>213.37m<sup>2</sup></b>

House Depth:	22.25m
House Width:	12.5m

### FEATURES:

- Porch Entry with space for a butlers table
- Master bedroom features Walk in Robe with a separate spacious Ensuite with private WC and double basins
- Bed 2, Bed 3 and Bed 4 are spacious with Built In Robes
- Modern Kitchen featuring a Scullery with ample pantry space
- Broom closet off Kitchen
- Separate WC to Main Bathroom
- Large Alfresco opening up main living areas
- Generous size Laundry and Linen
- Double Carport

