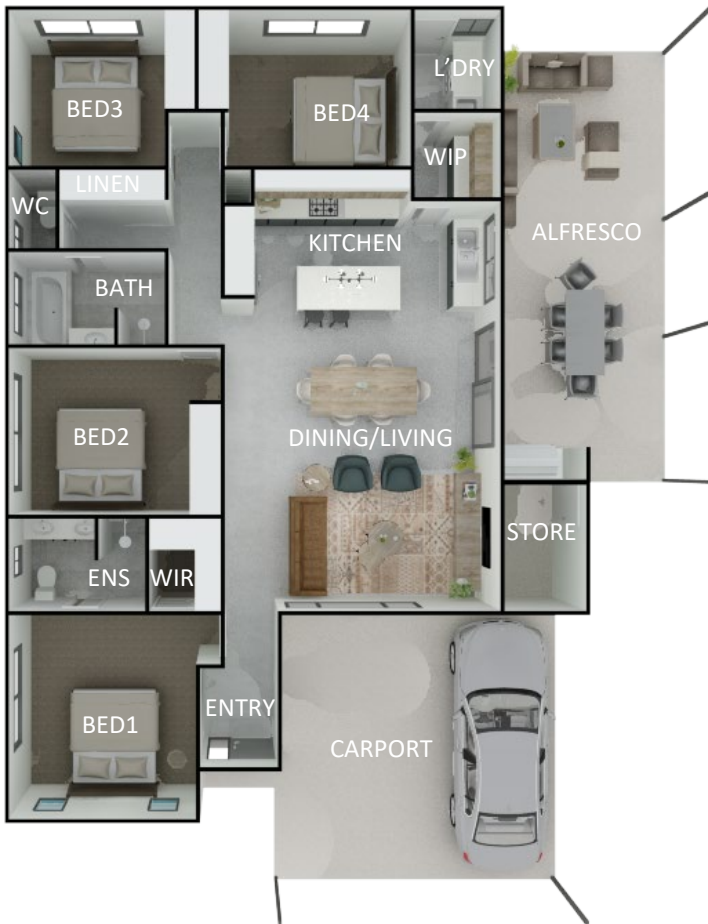




MONTGOMERY MKII

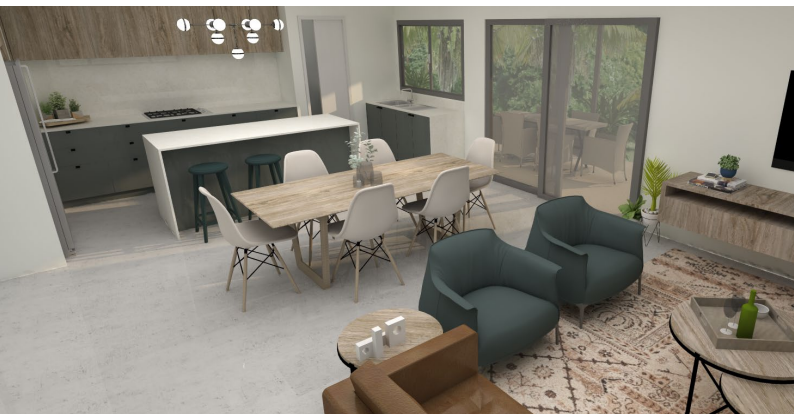


Living:	138.81m ²
Carport:	38.47m ²
Alfresco:	37.08m ²
Porch:	1.55m ²
TOTAL BUILDING:	215.91m²

House Depth:	17.77m
House Width:	13.75m

FEATURES:

- Seamless outdoor / indoor living spaces
- Open plan Living / Dining area
- Spacious Chief's Kitchen with Walk-In Pantry and servery through to Alfresco
- Large Alfresco for Entertaining with BBQ
- Generous linen cupboard
- Bed 1 with ENS and Walk-In Robe
- Built-in robes to secondary bedrooms
- Double Carport with Storage Room
- Generous Size Laundry



(08) 9192 1437

sales@hmtracey.com.au | www.hmtracey.com.au